

Researcher Workbench

Year Two: Enabling New Discoveries

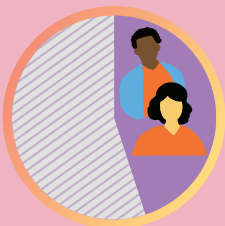
The *All of Us* Researcher Workbench is two years old! It contains expansive, interconnected health data generously contributed by a cohort of participants from diverse backgrounds and locations. This data is available to researchers on a broadly available, secure platform through a tiered access model, including Public, Registered, and Controlled Tiers.



Data From

372,000+ Participants

80%
are from
underrepresented
communities



45%
are from racial
and ethnic
minority groups

Our Researchers



2,300+
Registered
Researchers



350+
Institutions*

*Includes 40 HBCUs and Hispanic-Serving Institutions.

Data Now Available in the Researcher Workbench**



372,000+
Survey Responses



306,000+
Physical
Measurements



258,000+
Electronic Health
Records (EHR)



165,200
Genotyping
Arrays



98,600
Whole Genome
Sequences



12,800+
Fitbit
Records

Additional COVID-19 Data



From ~20,000
participants who have
had SARS-CoV-2



132,600+ Minute
Survey responses on
COVID-19 vaccines

Initial Social Determinants of Health (SDOH) Survey Data

Including:

Neighborhood Safety



Social Support



Discrimination



Food Security



From **57,600+** responses
to SDOH survey

This is Just the Beginning

In the coming years, *All of Us* expects to enroll 1M participants and continue adding new data to the dataset including:



**More
Wearables
Data**



**More
Surveys**



**New Linkages
to External
Data Sources**



**Ancillary
Study Data**

Already, the dataset has spurred **>50 peer-reviewed publications** and **>1,700 projects in the Researcher Workbench**.
For more information about our data, go to:

ResearchAllofUs.org/Tools

** Numbers reflect data available in the Controlled Tier as of June 2022.

All of Us and the All of Us logo are registered service marks of the U.S. Department of Health and Human Services.